

AUSTIN FOX  
ARCHITECTURE

COPY RIGHT 2024 - 2025

## gabriel@paramotikadesign.com

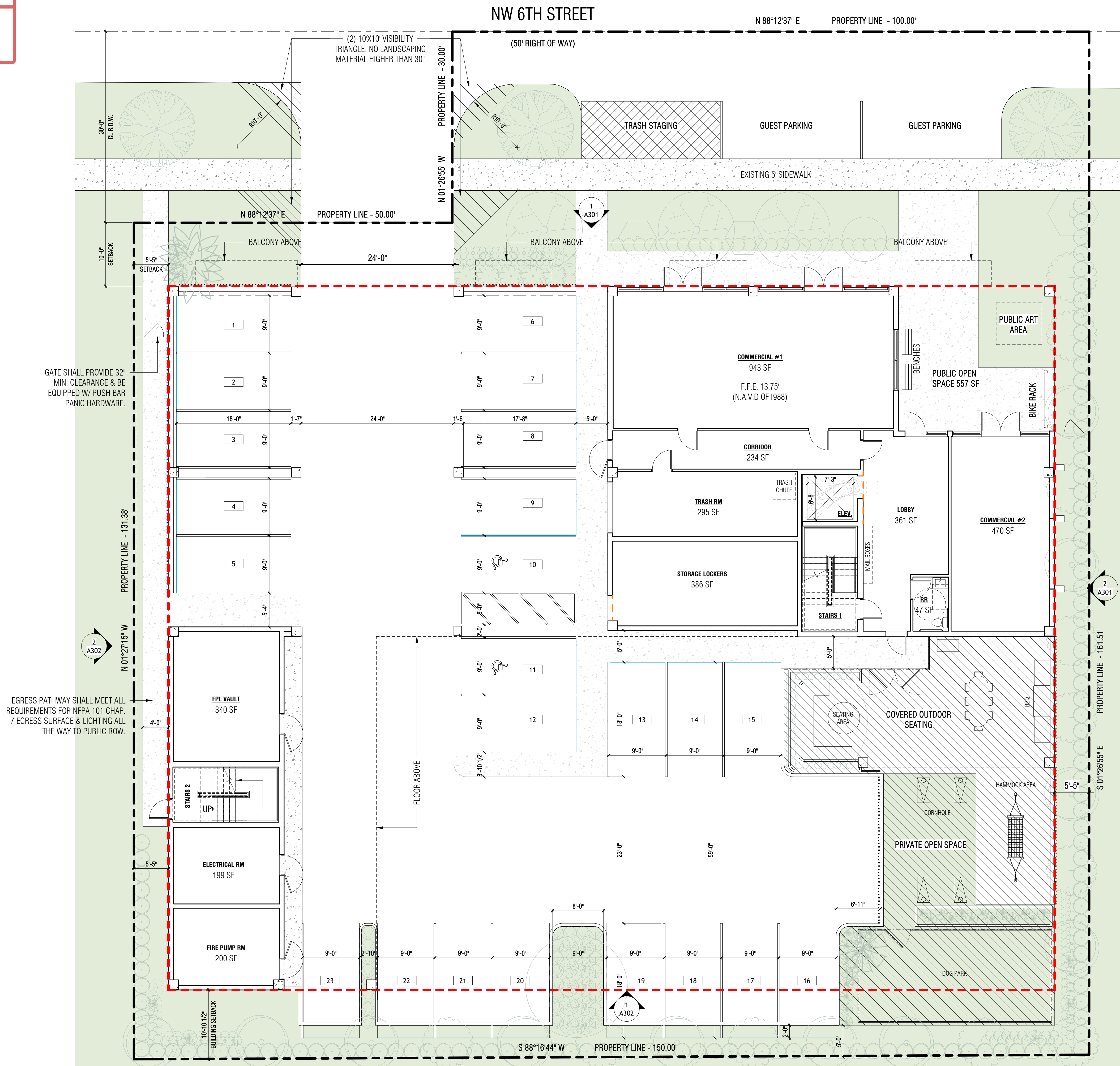
1. VANDAL PROOF/RESISTANT MOTION-SENSOR SECURITY ALERT LIGHTS WILL BE ADDED OVER ALL EXTERIOR DOORS AND OVERHANGS.
2. ALL SOLID EXTERIOR DOORS FOR RESIDENTIAL UNITS WILL HAVE A 180-DEGREE WIDE ANGLE DOOR VIEWER (PEEPHOLE).
3. ALL EXTERIOR DOORS WILL BE PRE-WIRED FOR BURGLAR ALARMS AND THEY WILL HAVE NON-REMOVABLE DOOR HINGE PINS. THEY WILL ALSO INCLUDE THE CAPACITY FOR ELECTRONIC DOOR POSITION SWITCHES TO SIGNAL A SECURITY ALARM SYSTEM THAT A DOOR, WHICH SHOULD NOT HAVE BEEN OPENED, HAS BEEN OPENED AND BREACHED.
4. ALL SOLID EXTERIOR DOORS FOR PARKING BUILDING AND RESIDENTIAL BUILDING EXTERIOR WILL HAVE A SEE-THROUGH REINFORCED SECURITY WINDOW.
5. FRONT DESK IN LOBBY WILL HAVE A CONCEALED SILENT PANIC DURESS ALARM AND A NIGHT-TO-LANTRYD FOR REDUNDANCY IN THE EVENT THE FIXED ALARM IS COMPROMISED.
6. THE KEY SECURITY OFFICE /ROOM/ KEY STORAGE CLOSING DOOR IT IS CONNECTED WITH AN ALARM AND A ROBUST MECHANICAL LOCKING SYSTEM AND A SURVEILLANCE CAMERA WILL BE MONITORING THE AREA.
7. ALL GLASS DOORS IN GROUND AND SECOND LEVEL WILL HAVE AN ANTI-PRY ROBUST SECURITY BAR DEVICE.
8. MANAGEMENT OFFICE DOOR WILL HAVE A SECURITY VIEWER (PEEPHOLE).
9. ALL AIR CONDITIONERS ARE ENERGY STAR QUALIFIED.
10. ALL UNITS HAVE TANKLESS WATER HEATERS.
11. THE PRINCIPAL BUILDING CONSTRUCTED TO MEET INCREASED WIND LOADS: 150PSF LOAD MINIMUM.
12. EXTERIOR LIGHTING SHALL COMPLY W/ PART 4 (EXTERIOR LIGHTING) OF ARTICLE 5: DEVELOPMENT STANDARDS, ALONG WITH THE FOLLOWING:
  - LIGHT POLES MUST NOT EXCEED A HEIGHT OF 17.5 FT ABOVE THE ADJACENT FINISHED GRADE.
  - CORBA HEADLIGHTS ARE NOT PERMITTED.
  - MAXIMUM ILLUMINATION AT THE PROPERTY LINE IS 3 FOOT CANDLES.

Project number	AF2552
Date	09.29.2025
Drawn by	MC
Checked by	AF

# A101

Scale

As indicated



TRUE PLAN

①

SCALE: 1/8" = 1'-0"

TRUE PLAN